

S8S

OUTDOOR LED DISPLAY



The full waterproof modules are rugged and capable to sink into water directly that delivers high-resolution images with unequalled brightness and contrast levels. They're professional designed for stadium perimeter and outdoor advertising applications. Available in various pixel pitches, they generate the perfect picture at all times, even under direct sunlight.

Features



Unique bracket support design, high stability



Super lightweight and thin cabinet structure



High reliability with front and rear waterproof design.

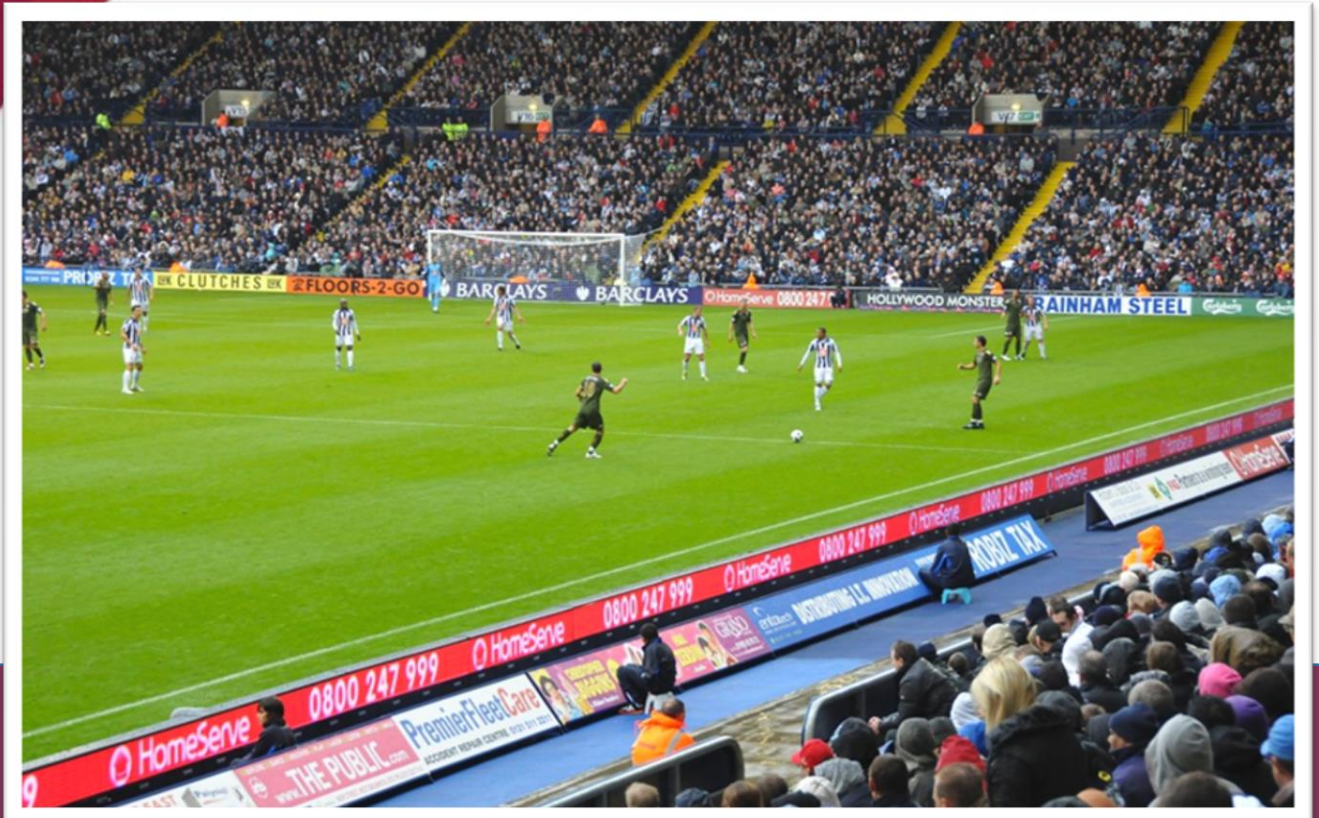


High efficient front & rear maintenance



S8S

OUTDOOR LED DISPLAY



Low heat emitting ensure the uniformity of shining surface;
panel fan-less design generates zero noisy; gapless split joint
help to see a completed smooth video interface

Specification & Model



Parameter		Value
Physical Parameter	Pixel Configuration	SMD3535
	Pixel Pitch (mm)	8
	Pixel matrix per panel	160x120
	Pixel density (pixels/sq.m.)	15625
	Cabinet Dimensions (LxWxH) (mm)	1280x960x141
	Module Dimensions (LxWxH) (mm)	320x320
	Panel material	Steel
	Cabinet weight (kg/panel)	52
	Module weight (kg/panel)	
Electronic Parameter	Color Grayscale (Bit)	12-16bit
	Gray Scale per Color (level)	4096-65536
	Refresh Rate (Hz)	≥1000; ≥2000;
	Driving Type	1-1/1, 1/1
	Signal Transmission Distance (m)	CAT5 cable: < 100 m; Single mode fiber: < 10 km
Optical Parameter	Brightness (nit)	6000
	Optimal Horizontal Viewing Angle (°)	140
	Optimal Vertical Viewing Angle (°)	140
Electrical Parameter	AC Input Voltage (V)	AC: 100V~240V
	AC Input Frequency (Hz)	50/60
	AC Input Power Maximum Value (W/m ²)	733
	AC Input Power Typical Value (W/m ²)	245
Circumstance Parameter	Storage Temperature (°C)	-40 -60
	Working Temperature (°C)	-20 -50
	IP rating (Front/Rear)	IP65/IP54
	Storage Humidity (RH)	10%~90% non-condensing
	Working Humidity (RH)	10%~60% non-condensing
	Lifetime Typical Value (hrs)	≥100000
Installation Type	Cabinet installation type	rental/fix