

L5S / L6S

OUTDOOR LED DISPLAY

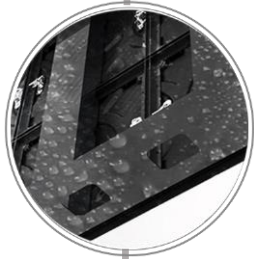


Feel protected in water

Applications:

Stadiums, The commercial plazas, Railway station squares, Airports, Pedestrian Streets, Bus stations, Metros, Leisure wharfs, Exhibition halls, etc.

Features



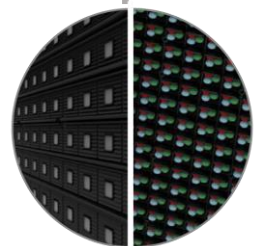
Waterproof module design, more reliable



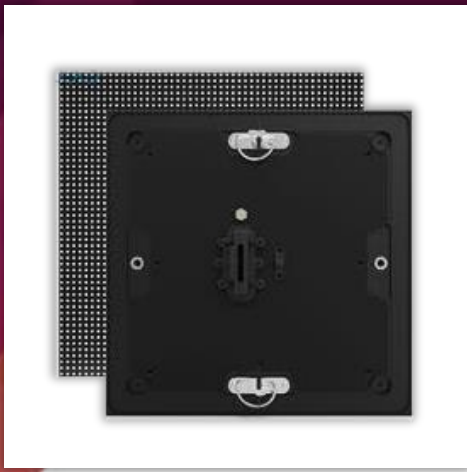
Protection board for control box



Control box supporting structure



**P10 has two versions
SMD and DIP option
available**



L5S / L6S

OUTDOOR
LED DISPLAY



High brightness outdoor led display ensures vivid and clear images quality even in the bright sunlight and fits both day and night.

Specification & Model



Parameter		L5S	L6S
Physical Parameter	Pixel Configuration	SMD1921	SMD2727
	Pixel Pitch (mm)	5	6
	Pixel matrix per panel	240x180	200x150
	Pixel density (pixels/sq.m.)	40000	27778
	Cabinet Dimensions (LxWxH)/ (mm)	1200x900x161	1200x900x161
	Module Dimensions (LxWxH)/ (mm)	300x300x20	300x300x20
	Panel material	aluminum/steel optional	aluminum/steel optional
	Cabinet weight (kg/panel)	38	38
	Module weight (kg/panel)	1.1	1.1
Electronic Parameter	Color Grayscale (Bit)	12-16bit	12-16bit
	Gray Scale per Color (level)	32768	32768
	Refresh Rate (Hz)	2880	≤1920
	Driving Type	1-#.#..	1-#.#..
	Signal Transmission Distance (m)	CAT5 cable: <100 m; Single mode fiber: <10 km	CAT5 cable: <100 m; Single mode fiber: <10 km
Optical Parameter	Brightness (nit)	6100	6200
	Optimal Horizontal Viewing Angle (°)	160	160
	Optimal Vertical Viewing Angle (°)	140	140
Electrical Parameter	AC Input Voltage (V)	AC: 100V~240V	AC: 100V~240V
	AC Input Power Maximum Value (W/m ²)	724	611
	AC Input Power Typical Value (W/m ²)	241	203
Circumstance Parameter	Storage Temperature (°C)	-100	-100
	Working Temperature (°C)	-70	-70
	IP rating (Front/Rear)	IP65/IP54	IP65/IP54
	Storage Humidity (RH)	10%~90% non-condensing	10%~90% non-condensing
	Working Humidity (RH)	10%~90% non-condensing	10%~90% non-condensing
	Lifetime Typical Value (hrs)	≥100000	≥100000
Installation Type	Cabinet installation type	fix	fix