

L5.9P/L7.8P

OUTDOOR LED DISPLAY

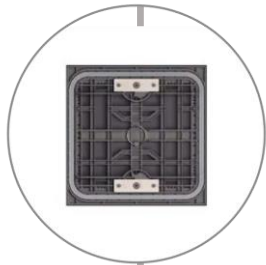


Cost effective full front maintenance outdoor display;
Traditional cabinet, waterproof and good heat -
dissipating; Wide viewing angle and amazing display
effect.

Features



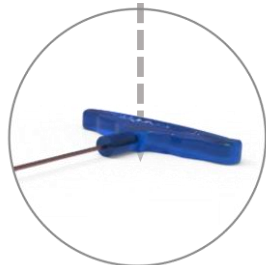
CLASSIC CABINET



**FRONT SERVICED
MODULE**



**STABLE AND TRUSTED
PERFORMANCE**



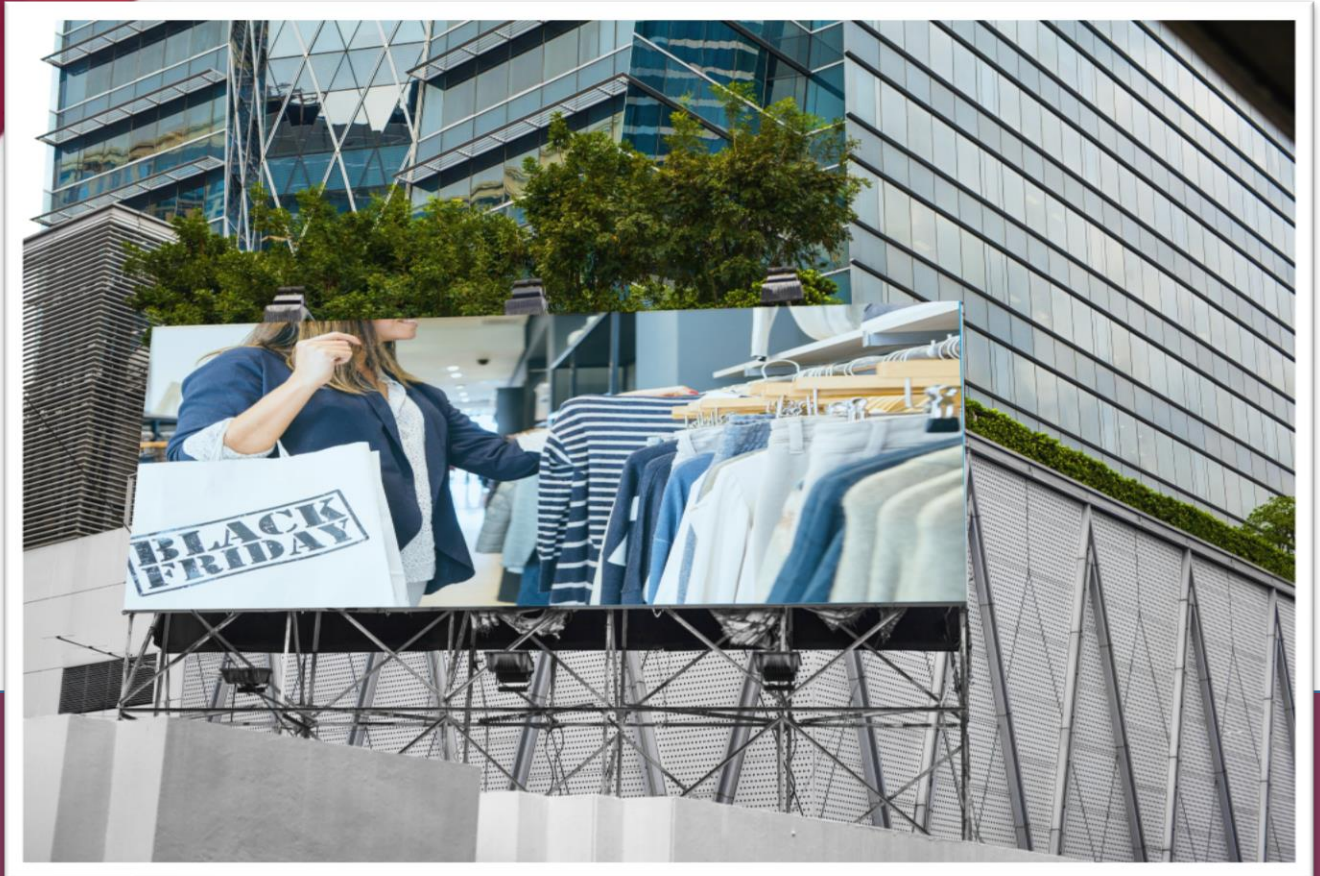
**FRONT MAINTENANCE
TOOL**



L5.9P/L7.8P

OUTDOOR

LED DISPLAY



LP series can be widely used in various markets. Commercial advertising, Digital billboard in outdoor display. This series provides an ideal solution for outdoor advertising. Recommended for : Commercial street, Shopping mall, Office building, Train station, Pedestrian street , Central park, street cross etc.

Specification & Model



Parameter		L5.9P	L7.8P
Physical Parameter	Pixel Configuration	SMD2727	SMD2727
	Pixel Pitch (mm)	5.9	7.8
	Pixel matrix per panel	169x169	128x128
	Pixel density (pixels/sq.m.)	28561	16384
	Cabinet Dimensions (LxWxH)/ (mm)	1000x1000x160	1000x1000x165
	Module Dimensions (LxWxH)/ (mm)	250x250x25	250x250x25
	Panel material	Aluminum	steel optional
	Cabinet weight (kg/panel)	37.8	60
	Module weight (kg/panel)	0.95	0.95
Electronic Parameter	Color Grayscale (Bit)	16bit	14-15bit
	Gray Scale per Color (level)	65536	16384-32768
	Refresh Rate (Hz)	≤1920	1920-3840
	Driving Type	1-n.a.	1-4:1.1.
	Signal Transmission Distance (m)	CAT5 cable: < 100 m; Single mode fiber: < 10 km	CAT5 cable: < 100 m; Single mode fiber: < 10 km
Optical Parameter	Brightness (nit)	6300	6300
	Optimal Horizontal Viewing Angle (°)	160	160
	Optimal Vertical Viewing Angle (°)	140	140
Electrical Parameter	AC Input Voltage (V)	AC: 100V~240V	AC: 100V~240V
	AC Input Power Maximum Value (W/m ²)	696	808
	AC Input Power Typical Value (W/m ²)	232	270
Circumstance Parameter	Storage Temperature (°C)	-100	-100
	Working Temperature (°C)	-80	-80
	IP rating (Front/Rear)	IP65/IP54	IP65/IP54
	Storage Humidity (RH)	10%~90% non-condensing	10%~90% non-condensing
	Working Humidity (RH)	10%~90% non-condensing	10%~90% non-condensing
	Lifetime Typical Value (hrs)	≥100000	≥100000
Installation Type	Cabinet installation type	fix	fix