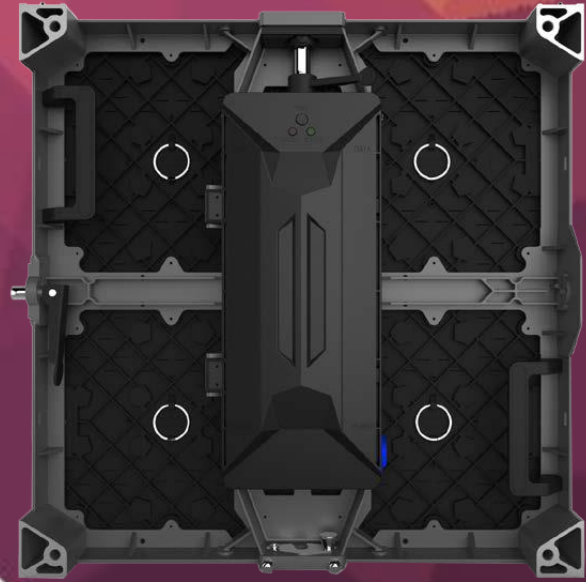


# GN2.5/2.6/3.1/3.9/4.8 500x500

## INDOOR LED DISPLAY

**STEP**  
SOLUTIONS

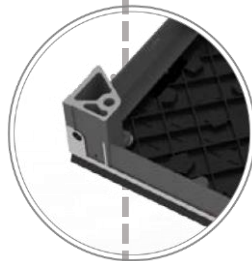


Multi-functional led display, amazing display effect with great noise control, recommended for boardroom, specialty stores, meeting rooms, monitoring and controlling center.

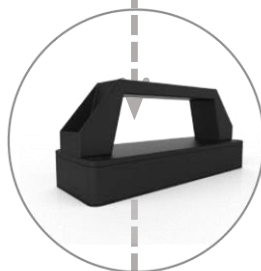
# Features



**High quality die-casting  
aluminum cabinet**



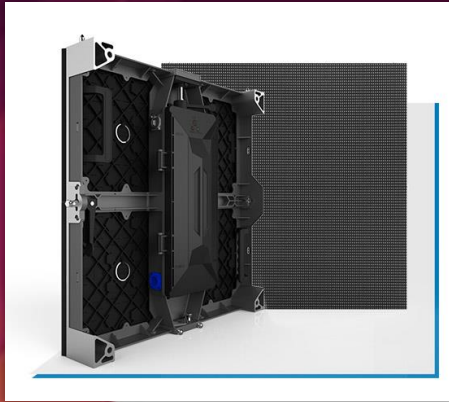
**Handle.Magnetic module**



**Front maintenance**



**Two size options  
assembly**

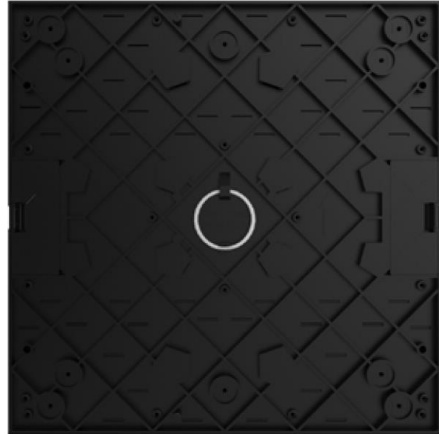


**GN2.5/2.6/3.1/3.9/4.8**  
**500x500**  
**INDOOR**  
**LED DISPLAY**



Multi-functional led display, amazing display effect with great noise control. The content will embrace you with vivid color and great visual impact.

# Specification & Model



Parameter		GN2.5	GN2.6	GN3.1	GN3.9	GN4.8
Physical Parameter	Pixel Configuration	SMD2020	SMD2020	SMD2020	SMD2020	SMD2020
	Pixel Pitch (mm)	2.5	2.6	3.1	3.9	4.8
	Pixel matrix per panel	200x200	192x192	160x160	128x128	104x104
	Pixel density (pixels/sq.m.)	160000	147456	102400	65536	43264
	Cabinet Dimensions (LxWxH) (mm)	500X500X83	500X500X83	500X500X83	500X500X83	500X500X83
	Module Dimensions (LxWxH) (mm)	250X250	250X250	250X250	250X250	250X250
	Panel material	Die Casting Aluminum	Die Casting Aluminum	Die Casting Aluminum	Die Casting Aluminum	Die Casting Aluminum
	Cabinet weight (kg/panel)	7.8	7.5	7.5	7.5	7.5
Electronic Parameter	Module weight (kg/panel)	0.6	0.6	0.6	0.6	0.6
	Color Grayscale (Bit)	13bit	13bit	13bit	13bit	13bit
	Gray Scale per Color (level)	8192	8192	8192	8192	8192
	Refresh Rate (Hz)	≥2880	1920	1920-3840	1920-3840	1920-3840
Optical Parameter	Driving Type	μ.A.-25	μ.A.-32	μ.A.-16	μ.A.-16	μ.A.-13
	Signal Transmission Distance (m)	CAT5 cable:<100 m; Single mode fiber:<10 km	CAT5 cable:<100 m; Single mode fiber:<10 km	CAT5 cable:<100 m; Single mode fiber:<10 km	CAT5 cable:<100 m; Single mode fiber:<10 km	CAT5 cable:<100 m; Single mode fiber:<10 km
	Brightness (nit)	1000	1000	1000	1000	1000
	Optimal Horizontal Viewing Angle (°)	160	160	160	160	160
	Optimal Vertical Viewing Angle (°)	140	160	160	160	160
Electrical Parameter	AC Input Voltage (V)	AC: 220V±10%	AC: 220V±10%	AC: 220V±10%	AC: 220V±10%	AC: 220V±10%
	AC Input Frequency (Hz)	50	50	50	50	50
	AC Input Power Maximum Value (W/m²)	528	360	392	456	412
Circumstance Parameter	AC Input Power Typical Value (W/m²)	176	120	130	152	137
	Storage Temperature (°C)	-40~60	-40~60	-40~60	-100	-40~60
	Working Temperature (°C)	0~40	0~45	0~45	0~45	0~45
	IP rating (Front/Rear)	IP40/IP21	IP40/IP21	IP40/IP21	IP40/IP21	IP40/IP21
	Storage Humidity (RH)	10%~90% non-condensing	10%~90% non-condensing	10%~90% non-condensing	10%~90% non-condensing	10%~90% non-condensing
	Working Humidity (RH)	10%~80% non-condensing	10%~80% non-condensing	10%~80% non-condensing	10%~80% non-condensing	10%~80% non-condensing
Installation Type	Lifetime Typical Value (hrs)	100000	100000	100000	100000	100000
	Cabinet installation type	Fix	Fix	Fix	Fix	Fix/Rental