

# BN2.6/2.8/3.1/3.9/ 4.8/5.9

## INDOOR LED DISPLAY

**STEP**  
SOLUTIONS



BN series can assemble as what you want it for, there are three cabinet sizes to choose: 750mm / 1000mm /1250mm x 250mm.

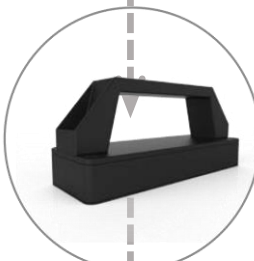
# Features



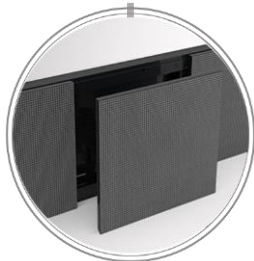
**Excellent performance**



**Front installation**



**Front maintenance**



**Assemble at will**



**BN2.6/2.8/3.1/3.9/**

**4.8/5.9**

**INDOOR**

**LED DISPLAY**



High definition images, dynamic animation effects,  
vivid video playing, support multiple broadcast format,  
widely application.

# Specification & Model



Parameter		BN2.6	BN2.8	BN3.1	BN3.9	BN4.8	BN5.9
Physical Parameter	Pixel Configuration	SMD2020	SMD2020	SMD2020	SMD2020	SMD2020	SMD2020
	Pixel Pitch (mm)	2.6	2.8	3.1	3.9	4.8	5.9
	Pixel density (pixels/sq.m.)	16765	12749	10400	6936	4354	2864
	Cabinet Dimensions (LxWxH) (mm)	(750/1000/1250)x250x55	(750/1000/1250)x250x55	(750/1000/1250)x250x55	(750/1000/1250)x250x55	(750/1000/1250)x250x55	(750/1000/1250)x250x55
	Module Dimensions (LxWxH) (mm)	250x250x15	250x250x15	250x250x15	250x250x15	250x250x15	250x250x15
	Panel material	Aluminum	Aluminum	Aluminum	Aluminum	Aluminum	Aluminum
	Cabinet weight (kg/panel)	5.6/5.8/5.5	5.6/5.8/5.5	5.6/5.8/5.5	5.6/5.8/5.5	5.6/5.8/5.5	5.6/5.8/5.5
Electronic Parameter	Module weight (kg/panel)	0.6	0.6	0.65	0.65	0.65	0.65
	Color Grayscale (Bit)	14bit	14bit	14bit	14bit	15bit	14bit
	Gray Scale per Color (level)	16384	16384	16384	16384	32768	16384
	Refresh Rate (Hz)	1920-3840	1920-3840	1920-3840	1920-3840	1920-3840	1920-3840
	Driving Type	3A-16	3A-30	3A-16	3A-16	3A-13	1-GA
Optical Parameter	Signal Transmission Distance (m)	CAT5 cable:<100 m; Single mode fiber:<10 km	CAT5 cable:<100 m; Single mode fiber:<10 km	CAT5 cable:<100 m; Single mode fiber:<10 km	CAT5 cable:<100 m; Single mode fiber:<10 km	CAT5 cable:<100 m; Single mode fiber:<10 km	CAT5 cable:<100 m; Single mode fiber:<10 km
	Brightness (nit)	1100	800	1000-1100	1200	900	1300
	Optimal Horizontal Viewing Angle (°)	160	160	160	160	160	160
Electrical Parameter	Optimal Vertical Viewing Angle (°)	160	160	160	160	160	140
	AC Input Voltage (V)	AC: 220V±10%	AC: 220V±10%	AC: 220V±10%	AC: 220V±10%	AC: 220V±10%	AC: 220V±10%
	AC Input Frequency (Hz)	50-60Hz	50-60Hz	50-60Hz	50-60Hz	50-60Hz	50-60Hz
	AC Input Power Maximum Value (W/m²)	494	410	432/501	501	443	519
Circumstance Parameter	AC Input Power Typical Value (W/m²)	165	137	151/167	167	148	173
	Storage Temperature (°C)	-100	-40-40	-40-40	-40-40	-100	-40-40
	Working Temperature (°C)	0-40	0-40	0-40	0-40	0-40	0-40
	IP rating (Front/Rear)	IP40/IP21	IP40/IP21	IP40/IP21	IP40/IP21	IP40/IP21	IP40/IP21
	Storage Humidity (RH)	10%-90% non-condensing	10%-90% non-condensing	10%-90% non-condensing	10%-90% non-condensing	10%-90% non-condensing	10%-90% non-condensing
Installation Type	Working Humidity (RH)	10%-60% non-condensing	10%-60% non-condensing	10%-60% non-condensing	10%-60% non-condensing	10%-60% non-condensing	10%-60% non-condensing
	Lifetime Typical Value (hrs)	100000	100000	100000	100000	100000	100000
	Cabinet installation type	Fix	Fix	Fix	Fix	Fix	Fix